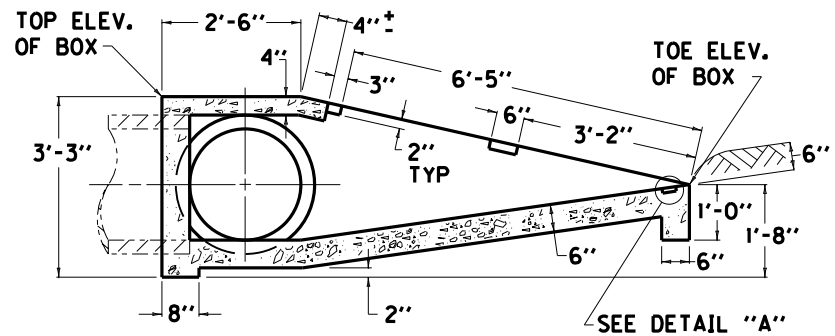
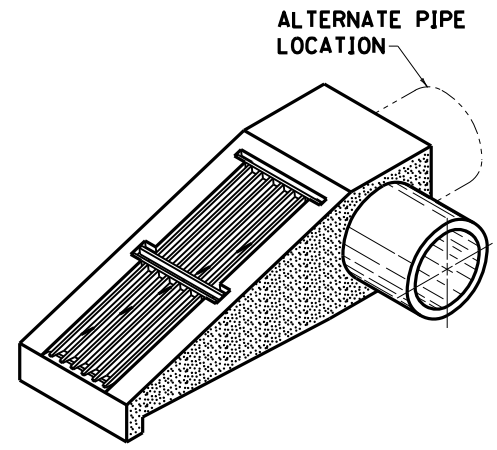


PLAN VIEW

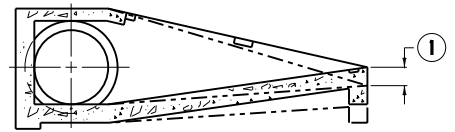


SECTION A-A

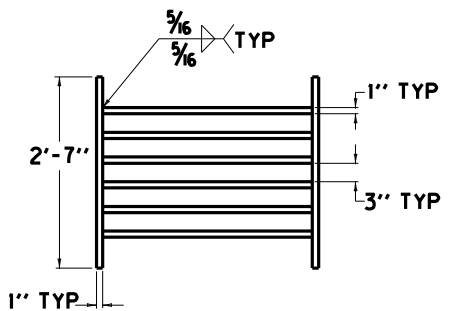


ISOMETRIC VIEW

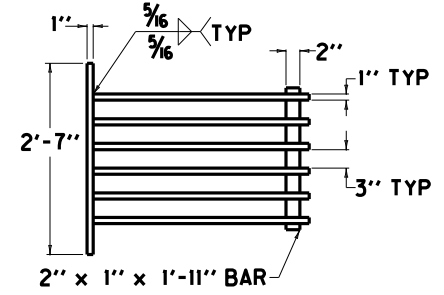
APPROXIMATE QUANTITIES			
CLASS "A" CONC.	GRATE	LBS. STRUCTURAL STEEL	
CUBIC YARDS	NUMBER	EACH GRATE	TOTAL POUNDS
1.44	1	145	298
	2	153	



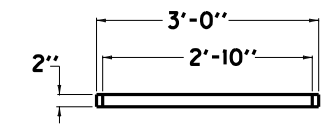
SECTIONAL VIEW



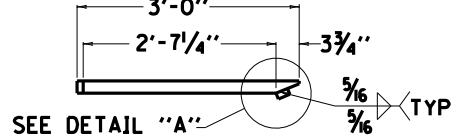
GRATE NO. 1 PLAN VIEW



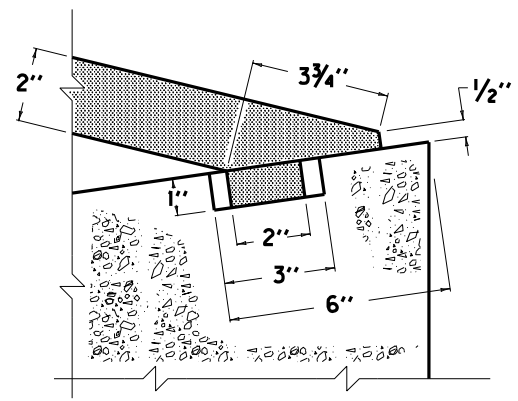
GRATE NO. 2 PLAN VIEW



GRATE NO. 1 SIDE ELEVATION



GRATE NO. 2 SIDE ELEVATION



DETAIL "A"

- NOTES**
- ITEM CODE BID ITEM UNIT
- 1726 SAFETY BOX INLET-18 INCH SDB-1 EACH
- 1727 SAFETY BOX INLET-24 INCH SDB-1 EACH
- THE UNIT BID FOR EACH STRUCTURE SHALL INCLUDE ALL CONCRETE, STRUCTURAL STEEL GRATING, EXCAVATION, LABOR AND INCIDENTALS NECESSARY FOR ITS CONSTRUCTION AS DETAILED ON THIS SHEET.
- ① TOE OF BOX SHALL BE RAISED OR LOWERED TO FIT EXISTING FIELD CONDITIONS.
- ② SKEW OF BOX SHALL VARY TO FIT EXISTING FIELD CONDITIONS.

KENTUCKY
DEPARTMENT OF HIGHWAYS

**SAFETY TYPE
BOX INLET
(18" OR 24")**

APPROVED _____
DATE 06-04-2008